

Meetings Focus[®]

THE DESTINATION EXPERTS

VOLUME 11 | NUMBER 7 | OCTOBER/NOVEMBER 2011

\$5

east

MEETINGSFOCUS.COM

Eastern Gaming Expansion

Pennsylvania Playtime

Delaware: Small Wonder

Taxing Times

Visitors are increasingly footing the bill for CVB tourism marketing

0450
P386
108
343

ME 639147
KEN MARTIN EXEC DIR
AMERICAN PHILATELIC SOCIETY
100 MATCH FACTORY PL
BELLEFONTE PA 16823-1367
*****AUTO**5-DIGIT 16823

|||||

Cover

30 Taxing Times

As CVBs take funding hits from financially strapped local governments, visitors may be getting stuck with the bill. *By Ruth A. Hill*

Destinations

8 Small Wonder

The geographically small state of Delaware packs a punch, with inviting towns, historic attractions and recreational pursuits. *By Carolyn Blackburn*

13 Peak Performers

Culturally and historically rich off-site venues in Greater Springfield and the Berkshires rise to the occasion. *By Jeff Heilman*

18 Shore Thing

The Lake Erie Shores and Islands area offers a scenic, meetings-ready escape with an attractive price tag. *By Katie Morrell*

22 Class Acts

Venues throughout the State College area are standouts for memorable gatherings. *By Jeff Heilman*

26 PA Playtime

From chocolate decadence to Amish simplicities, the cities of south-central Pennsylvania have a unique way of mixing business with pleasure. *By Zach Chouteau*



13



18



8



22

Features

46 Eastern Expansion

Gaming destinations throughout the East are unveiling new action-packed meeting and entertainment options. *By Tony Bartlett*



26

Departments

Checking In.....	4
News Trends.....	5
Site Scene.....	6
Short Takes.....	7



Palmer Museum of Art



Pennsylvania Military Museum

Class Acts

State College, Pa., gets high marks for 10 standout off-sites

WITH 24 CAMPUSES around Pennsylvania, the nation's largest dues-paying alumni association and academic outreach serving millions around the globe, Penn State is synonymous with the highest levels of education and enlightenment.

The hub of all this activity is the main University Park campus in centrally located State College, Pa., where groups can find their own inspiration in a number of local cultural and historical destinations.

"Along with the standard hotel meeting spaces, Central Pennsylvania and State College offer several unique meeting sites as well as a variety of cultural offerings that will make your attendees think they're in a much larger metropolitan area, without all the parking hassles," says Betsey Howell, executive director of the Central Pennsylvania CVB. "You can choose the 'usual' or you can combine education with history and culture for an even better experience. Either way, our dedicated CVB staff will make sure your conference attendees receive continuing education while they're here—and have fun doing it."

Open and staffed seven days a week, the Centre County/Penn State Visitor Center is conveniently located across from Beaver Stadium, housing the CVB and visitor amenities galore. In nearby Innovation Park, the 300-room Penn Stater Conference Center Hotel, with more

than 58,000 square feet of space, is the area's premier conference property. Meanwhile, the following 10 venues, conveniently located on or near campus, vividly bring the State College experience to life.

1. THE ARBORETUM AT PENN STATE, UNIVERSITY PARK

www.arboretum.psu.edu

Dedicated in 2010, this all-natural educational environment beautifully enhances Penn State's event capabilities. With the canopy and portico of the Overlook Pavilion serving as an elegant stage for weddings, reunions, receptions and other gatherings, the sprawling Arboretum, with 30 acres developed into gardens and a landscaped lawn adjacent to the Penn State campus, is ready-made for scenic outdoor events.



Arboretum at Penn State

“With the pavilion accommodating up to 200 for ceremonies, 300 for cocktails and 95 for seated dinners, your guests can stroll through specialty gardens filled with more than 700 species and cultivars of plants, including a rose and fragrance garden and an oasis garden with lotus pool,” says Kate Reeder, the Arboretum’s event and marketing coordinator.

Named for Penn State graduate H.O. Smith (1920), whose son and fellow alum Charles (1948) provided major funding for the facility, the developing Botanic Garden is among the arboretum’s star attractions, with plans ahead for an education center and conservatory.



Nittany Lion Inn

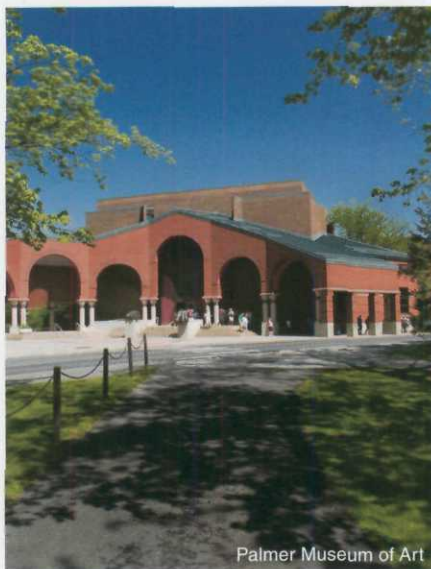
2. NITTANY LION INN, UNIVERSITY PARK

www.nittanylioninn.psu.edu

Named “Penn State’s Living Room” by a former school president, this Historic Hotels of America property is where Penn State alumni and loyalists come home. With blue and white decor throughout, the inn, built in 1931, has transitioned from a modest lodging to a grand 223-room hotel with 25,000 square feet of meeting and function space and two restaurants. From on-site event planners to complimentary shuttle service to University Park Airport and other key area coordinates, the amenities are as extensive as the service is impeccable.

“The Nittany Lion Inn is a destination for weddings, celebrations and special events,” says Fran Levin, senior sales manager. “For alumni and groups alike, it is the place to celebrate memories and traditions.”

Nestled in the northwest corner of campus, the inn is within convenient reach of a number of attractions, including Penn State’s Blue and White golf courses.



Palmer Museum of Art

3. PALMER MUSEUM OF ART, UNIVERSITY PARK

www.palmermuseum.psu.edu

Close to the Nittany Lion Inn and legendary ice cream shrine the Berkey Creamery, the Palmer Museum of Art is a unique cultural resource for groups. Since opening in 1972, the free-admission museum, which includes 11 galleries, a 150-seat auditorium and an outdoor sculpture garden, has become a regional fixture.

The museum’s permanent collection includes paintings, sculpture, photographs and works on paper ranging from 1500 B.C. to the present and representing Western and non-Western cultures. Within this broad cross section, the museum has areas of particular strength, including American art from the 18th century to the present; Old Master paintings and works on paper; and Asian, Danish, British, Peruvian and American ceramics.

“We can serve as a venue for small receptions for around 100 to 120 people if the group is genuinely interested in visiting the museum and seeing the collections,” says Jan Muhlert, the museum’s director. “The Palmer is a great break for conference attendees, especially if they are holding their meetings at the nearby Nittany Lion Inn.”

4. MOUNT NITTANY CLUB AT BEAVER STADIUM, UNIVERSITY PARK

www.pennstatehotels.com

From its commanding perch high within Penn State’s historic Beaver Stadium, the Mount Nittany Club is a triumphant space for group gatherings. With dramatic, 40-foot windows overlooking the football field on one side and the panoramic Mount Nittany valley on the other, the sensational backdrops are enhanced by the atmosphere and prestige

of one of America’s most celebrated sporting venues. The second-largest in the nation, the present Beaver Stadium celebrated its 50th anniversary in 2010.

“Lending itself to a variety of events, the spectacular 12,500-square-foot Mount Nittany Club is the ideal meeting space for sports enthusiasts and non-fans alike,” says Bob White, club and suites director.



Mount Nittany Club at Beaver Stadium

Comfortably and flexibly accommodating small, medium and large weddings, networking luncheons and other social and business gatherings, the club features dining areas, cozy leather couches and easy chairs. Also located in the stadium, the relaxing Letterman’s Lounge and Recruiting Lounge are ideal for corporate parties, banquets, anniversary celebrations and other events.

5. BRYCE JORDAN CENTER, UNIVERSITY PARK

www.bjc.psu.edu

As if airlifted from a major city, this multi-purpose arena brings all the excitement, staging capability and hosting capacity of big-time metropolitan entertainment and events to rural State College and the surrounding Happy Valley. In addition to hosting circuses, sports exhibitions, family shows, commencements, lectures, Big Ten Basketball and top musical acts, the 16,000-seat facility, situated on the Penn State campus adjacent to Beaver Stadium, offers complete conference services, including catering, meeting room accommodations, exhibit decorating and state-of-the-art audiovisual equipment. Accommodating groups and events from a 20-person executive meeting to a banquet for 1,600 guests to a concert with 15,000 attendees, the venue is the largest of its kind in Central Pennsylvania.

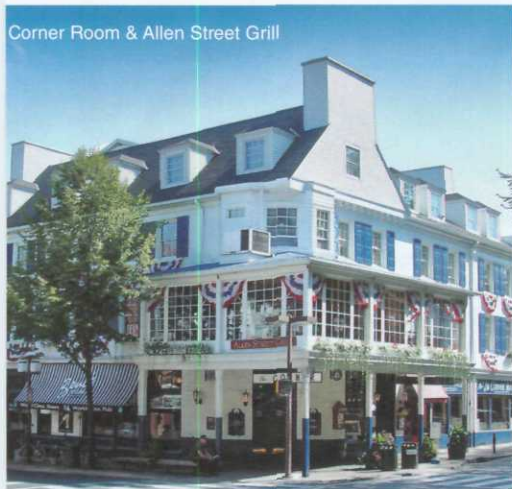
continued on page 24

6. CORNER ROOM & ALLEN STREET GRILL, STATE COLLEGE

www.hotelstatecollege.com

Opened in 1855 when Penn State was founded, the historic Hotel State College and Company building is Centre County's original center of hospitality. Located in the heart of State College, this local cornerstone is home to two lively dining and event destinations, the first-floor Corner Room and the second-floor Allen Street Grill.

"With great food, warm hospitality and the perfect downtown location, it's no wonder people so often say 'Meet me at The Corner!'" says Mike Desmond, Hotel State College and Company partner. "Serving traditional and contemporary American cuisine and late-night specials, the Allen Street Grill also provides private banquet rooms for special events."



Corner Room & Allen Street Grill

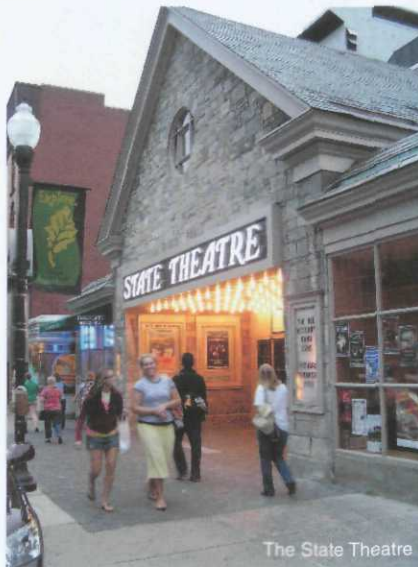
Ideal for small to medium gatherings, the grill can host groups of four for lunch or up to 30 for business meetings and rehearsal dinners. With authentic old world charm, the Corner Room has been a meeting place since 1926, while the grill's second-floor porch overlooks College Avenue and the main gates to Penn State and the Old Main Lawn.

7. THE STATE THEATRE, STATE COLLEGE

www.thestatetheatre.org

Becoming the third theater in State College when it opened in 1938, the State Theatre, built for RCA Films under the supervision of Warner Bros., introduced the concept of the "functional" movie house, less focused on ornate design and more on improving the overall movie-viewing experience.

Today, the fully restored non-profit community theater stages a wide range of artistic performances, while offering planners two flexible options for events, one of which is



The State Theatre

the 571-seat theater itself, including use of all box office services, configurable seating, dressing rooms, house manager and technical director during performances. A great programming option for birthdays, socials and sales events, "My Favorite Movie" rentals include the big-screen running of a film chosen by the group, along with the group's or host's name on the marquee and promotional materials.

Ideal for receptions, luncheons and dinners, meetings and smaller productions, the Upper Lobby theatre space comes with an adjacent catering kitchen and convenient elevator access.

8. CENTRE FURNACE MANSION

www.centrefurnace.org

The historic Centre Furnace Mansion is a beautifully restored and furnished 19th century ironmaster's home located adjacent to the Pennsylvania State University campus,



Centre Furnace Mansion

one mile from Beaver Stadium. Also serving as the headquarters of the Centre County Historical Society, the mansion, listed on the National Register of Historic Places, and adjoining iron furnace stack mark both the beginnings of the local charcoal iron industry and the birthplace of Penn State. In 1855, the winning bid of two local ironmasters beat out six other counties vying for the Pennsylvania Agricultural Society's planned new school. Opened that year on 200 acres of donated Centre Furnace land, Farmers' High School would eventually become Penn State.

"Several acres of beautifully landscaped grounds, historic trees and perennial and heirloom gardens provide a unique setting for alumni reunions, business socials, garden parties and other outdoor tented gatherings, comfortably accommodating 150 people," says Mary Sorenson, executive director. "The mansion's interior Hearth Room can accommodate up to 50 guests, and with hotels and restaurants nearby, group tours of the property are available by appointment."



American Philatelic Center

9. AMERICAN PHILATELIC CENTER, BELLEFONTE

www.stamps.org

From 1899 to 1947, the Pennsylvania Match Company grew to become one of America's leading producers of wooden matches, operating out of a sprawling red-brick industrial complex in Victorian-era Bellefonte, some 20 minutes from State College. After the company closed its doors, the national historic site sat vacant for over 50 years, eventually bought and restored in 2002 by the American Philatelic Society. Counting some 35,000 members in more than 110 countries, the society, dating to 1886, is the world's largest nonprofit organization for stamp collectors.

Offering programs including seminars and educational courses, the facility also flexibly



Pennsylvania Military Museum

hosts gatherings and events.

"In addition to serving as the offices of the American Philatelic Center and about 10 other businesses, approximately 5,000 square feet of space is available for groups," says Ken Martin, executive director. "Frequent uses include wedding receptions, training, shows and fairs, mediation, concerts and organizational meetings."

Among the available rooms is Sundman Hall, accommodating 160 people for banquets and 200 people theater style, and the aptly named Air Mail Room, hosting up to 50 people.

10. PENNSYLVANIA MILITARY MUSEUM, BOALSBURG

www.pamilmuseum.org

Located on the grounds of the 28th Infantry Division's National Shrine in the village of Boalsburg, some 10 minutes from State College, this stirring museum honors the contributions of Commonwealth citizens throughout the 20th century in defense of the state and nation with year-round interpretive exhibits, displays and educational programming.

"The Pennsylvania Military Museum offers a relaxing meetings alternative to

campus lecture halls and hotel conference rooms," says Joseph Horvath, museum educator. "The James C. Rosborough Memorial Theater can be adapted to a number of seating arrangements for more than 60 attendees, with services including PowerPoint projection capability and full-course catering or sandwich menus from local restaurants."

Historic Boalsburg, also home to the Columbus Chapel and Boal Mansion Museum and the Boalsburg Heritage Museum, holds a strong claim to being the birthplace of Memorial Day in 1864. **MFE**

Jeff Heilman is a regular contributor to MEETINGS FOCUS EAST and also covered the State College area for the publication in 2010.

Search for detailed information about CVBs, hotels and meeting facilities in State College by visiting our website at MeetingsFocus.com/Pennsylvania.

CVB Contact

Central Pennsylvania CVB
814.231.1401
www.visitpennstate.org

For more information, visit: MeetingsFocus.com

THE NITTANY LION INN

THE PENN STATER
Conference Center Hotel

at the **Centre** of it all

activity adventure fun learning Pennsylvania

The Nittany Lion Inn and the Penn Stater Conference Center Hotel are home to Central Pennsylvania's premier conference facilities. Guests enjoy technology-ready meeting rooms, one-of-a-kind dining experiences, and a long list of unrivaled amenities.

The Penn Stater

The 300-guest room and 41-conference room hotel is ready to take on any sized conference. Treat your colleagues to modern meeting rooms and comfortable guest rooms. Socialize in our in-hotel pub, relax in the pool, and enjoy a delicious entrée at our restaurant.

The Nittany Lion Inn

The historic Inn is Central Pennsylvania's newest Four Diamond hotel. Our conference services and award-winning restaurants match our highly rated amenities and guest experience. Located on campus at Penn State University Park, the Inn offers 223 guest rooms and 25,000 square feet of meeting space.



www.pennstatehotels.com

800-233-7505